

Service Model

Healthcare Facility Emergency Preparedness Program

MISSION of our Emergency Preparedness Program

Maintain uninterrupted access to patient care during disasters or emergencies with a focus on:

- Safeguarding human resources,
- Maintaining business continuity, and
- Protecting physical resources

AUTHORITY

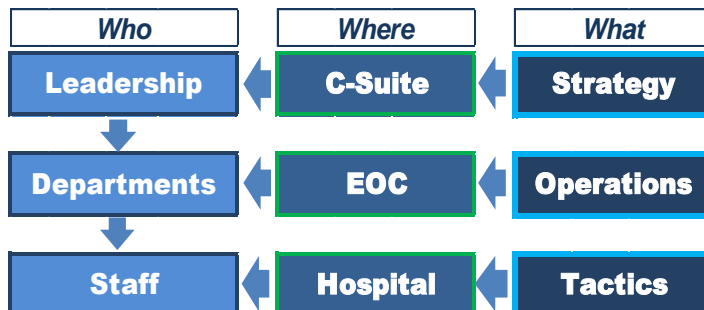
- **Statutes & regulations form the basis of our authorities**
 - The Joint Commission (TJC)
 - Centers for Medicare and Medicaid Services (CMS)
 - Commission on Accreditation of Rehabilitation Facilities (CARF)
- **Executive mandate:** *We need highly visible support from organizational leadership*

DOCTRINE

- **Emergency management standards of practice: form the basis of our approach**
 - ICS/ National Incident Management System
 - ANSI/ EMAP 4-2016 Emergency Management Standard
 - ISO 22320 Emergency management

IMPLEMENTATION

- **Hazard Identification:** *We convene diverse stakeholders across the organization to assess threats*
- **Capacity Building:** *We convene working groups to maintain sustained focus on key capabilities including:*
 - MCI Patient Surge
 - Mass Decon Patient Surge
 - Extreme Weather
 - Labor Actions
 - Highly Infectious Disease Outbreaks
- **Planning:** *We document structure, processes, teams, tools, roles and responsibilities in written plans*



Working Session: Borough Coalition Support to Healthcare Emergency Preparedness

IMPLEMENTATION (cont.)

Exercises: *We conduct TTX and full-scale exercises with staff from every level of the organization, based on detailed scenarios*

- We integrate **tools** incl field manuals, tactical vests, sim patients and patient tracking boards
- We **document** strengths and challenges and **follow-up**



- **Training:** *We provide a consistent schedule of training that addresses key capability gaps*
- **Operations:** *We maintain watch capability & readiness to activate incident ops 24/7 reinforced with internal drills*
- **Emergency Communications:** *We have an ability to communicate to all levels of the organization in real-time*
- **External Coordination:** *We collaborate with ESF-8 agencies to enhance coordination, planning and response*

MISSION of the Borough Healthcare Coalition

- **We coordinate w/members during Blue Sky to facilitate:**
 - Strategic and operational planning
 - Identification of gaps and mitigation strategies
 - Benchmark best practice**
 - Provide justification for resources/ executive mandate**
- **We coordinate w/ members during Gray Sky to facilitate:**
 - Operational response
 - Information sharing for improved situational awareness
 - Resource coordination and management
 - Surge staffing support**
 - Consequence management**



HOW does the Borough HCC achieve its mission?

- **By increasing** *Borough Coalition Membership*
- **By developing a** *DRRT featuring Equipment and Supplies*
- **By conducting** *Call-down Notification Drills*
- **By developing a** *Borough-wide project/ exercise based on strategic plan or HVA/ AAR/IP*
- **By maintaining** *a schedule of consistent practice (drills)*